

Supporting people with Learning Difficulties and Learning Disabilities

2023 to 2027



Easy
Read



Contents

Introduction.....	3
Why we wrote this vision.....	4
What we want to do	7
What happens next	12
For more information	13



In this Easy Read document, hard words are in **bold**. We explain what these words mean in the sentence after we have used them.



Some words are blue and underlined. These are links that will go to another website which has more information.

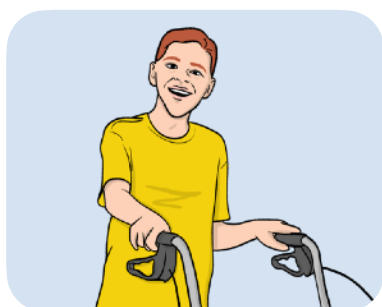
Introduction



This information is from Birmingham and Solihull NHS.



It is about our vision to support people with **Learning Difficulties** and **Learning Disabilities** in Birmingham and Solihull.



Learning Difficulties are challenges that children have in learning new things. This might be because they have a learning disability or understand information in different ways.



Learning Disabilities are challenges with learning or doing new things throughout someone's life. A learning disability is different for each person.



This information will tell you why and how we want to support people with Learning Disabilities and Difficulties in the next 5 years.

Why we wrote this vision



We wrote this vision because we want people with Learning Difficulties and Disabilities to:



- Live a good and full life.



- Get the right support when they need it.



People with Learning Difficulties and Learning Disabilities want to:

- Enjoy their lives in Birmingham and Solihull.



- Feel that they have the same life chances as everyone else.



To help people with Learning Difficulties and Learning Disabilities do this, we need to make sure they have a fair chance to use our services.



We wrote this vision to find out ways that we can help this to happen.

Different people and organisations were involved in writing this vision, including:



- People with Learning Difficulties and Learning Disabilities.



- Birmingham and Solihull NHS.



- Birmingham City Council.

Also involved in writing this vision were:



- Solihull Council.



- Solihull Parent Carer Voice - this is a group of parents who care for their children.

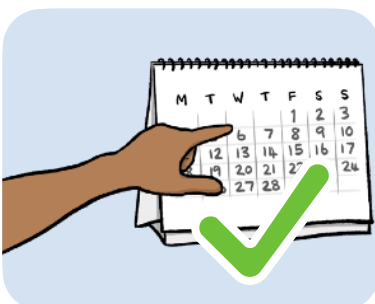
We want to make sure that we are supporting people with Learning Difficulties and Disabilities to:



- Know what they need and how to look after themselves.



- Get the support they need to do things on their own.



- Get the right support at the right time for them.

What we want to do



We have written a list of **priorities**.

Priorities are the most important things we want to work on.

Priority 1: Including people with Learning Difficulties and Disabilities

We want to:



- Make people with Learning Difficulties and Disabilities feel included in their local area.



- Get more people to understand what Learning Difficulties and Disabilities are.



- Make it easier to use our online services.

We want to:



- Make it easier to get support for someone's needs when they first need support.



- Make it easier for people with Learning Difficulties and Learning Disabilities to get a job.

Priority 2: Having good services and supporting people to choose the best service for them

We want to:



- See health and **social care** services giving good support to everyone they care for.

Social care is support for people who need some help with everyday life, like washing and eating.



We want to:

- Give people a choice of good services.



- Make it easier for people to stay living in their local area.



- See people doing well in education and their jobs.

Priority 3: Supporting people in all parts of their life

We want to:



- Think about support for the families of someone with learning difficulties or disabilities.



- Make sure that the person's needs and opinions are at the centre of decisions that are made about them.



- Help people to make friends and connections with others.

Priority 4: Making health and social care fairer

We want to:



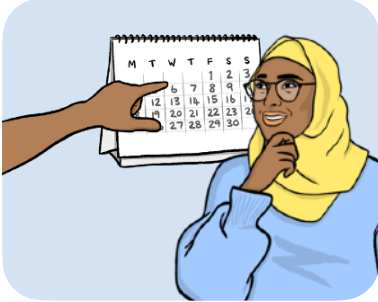
- Train carers and families in how to support people with Learning Difficulties and Disabilities.



- Give people with Learning Difficulties and Learning Disabilities health checks every year.



- Make healthcare better by following advice from a report that was written after looking into the deaths of autistic people.



- Make sure services are available at the right time and that they are easy to find and use.

What happens next



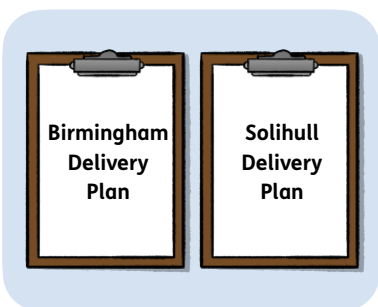
We will work with people who have Learning Difficulties and Learning Disabilities to check that we are working towards our priorities.



We will check that our ideas are working at different points in time.



We will make 2 plans that set out what actions we need to take.



These will be:

1. Birmingham Delivery Plan.
2. Solihull Delivery Plan.



These plans will be written in the future.

For more information



You can look at our website here:

www.birminghamsolihull.icb.nhs.uk

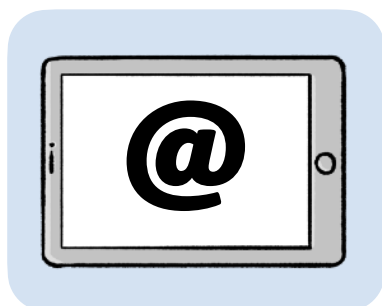
You can use this form on our website to contact us:

www.birminghamsolihull.icb.nhs.uk/contact-us

If you need more information please contact us by:



- Phone: 0121 203 3300



- Email: contactusbsolics@nhs.net



- Post:
NHS Birmingham and Solihull
First Floor
Wesleyan
Colmore Circus
Birmingham
B4 6AR

This Easy Read information has been produced by easy-read-online.co.uk